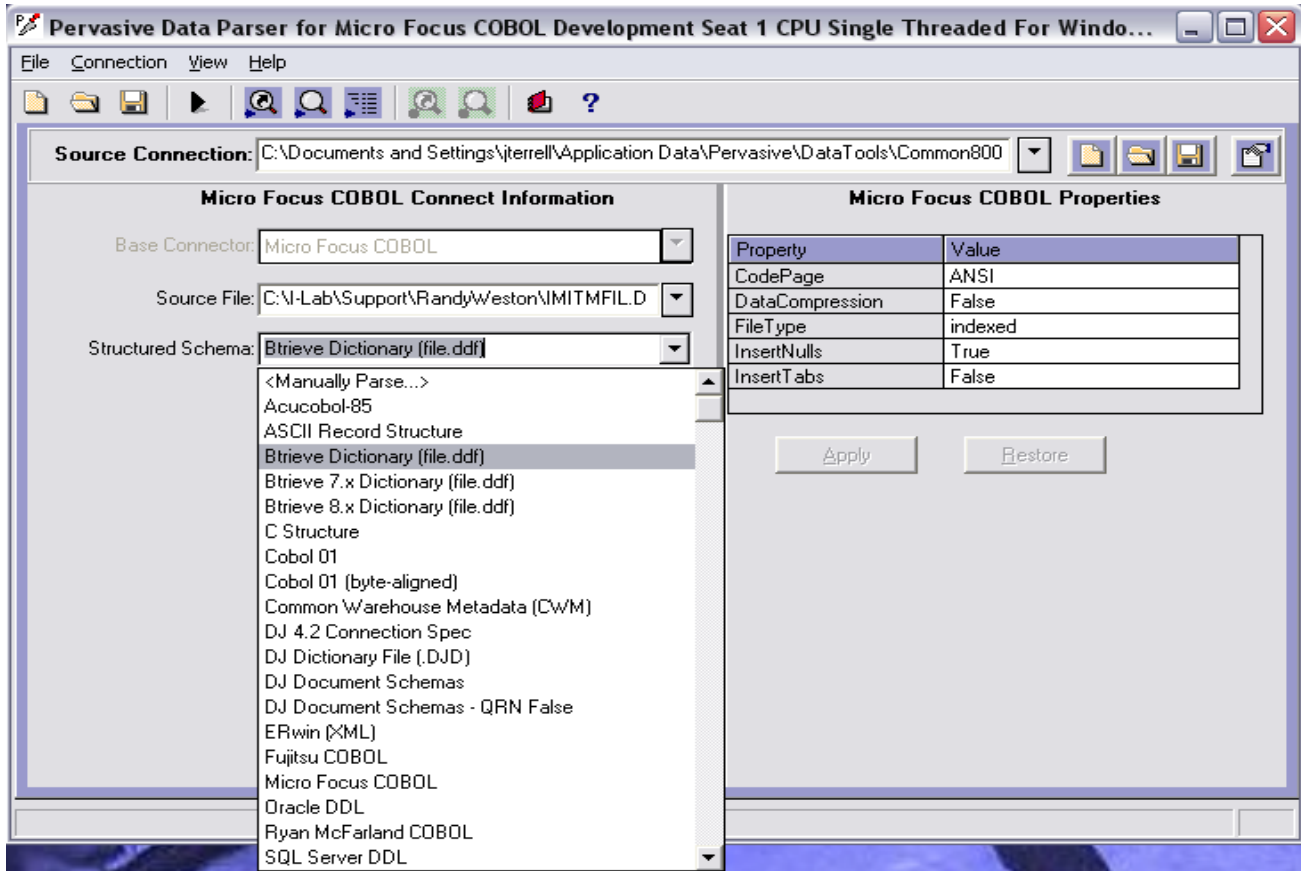


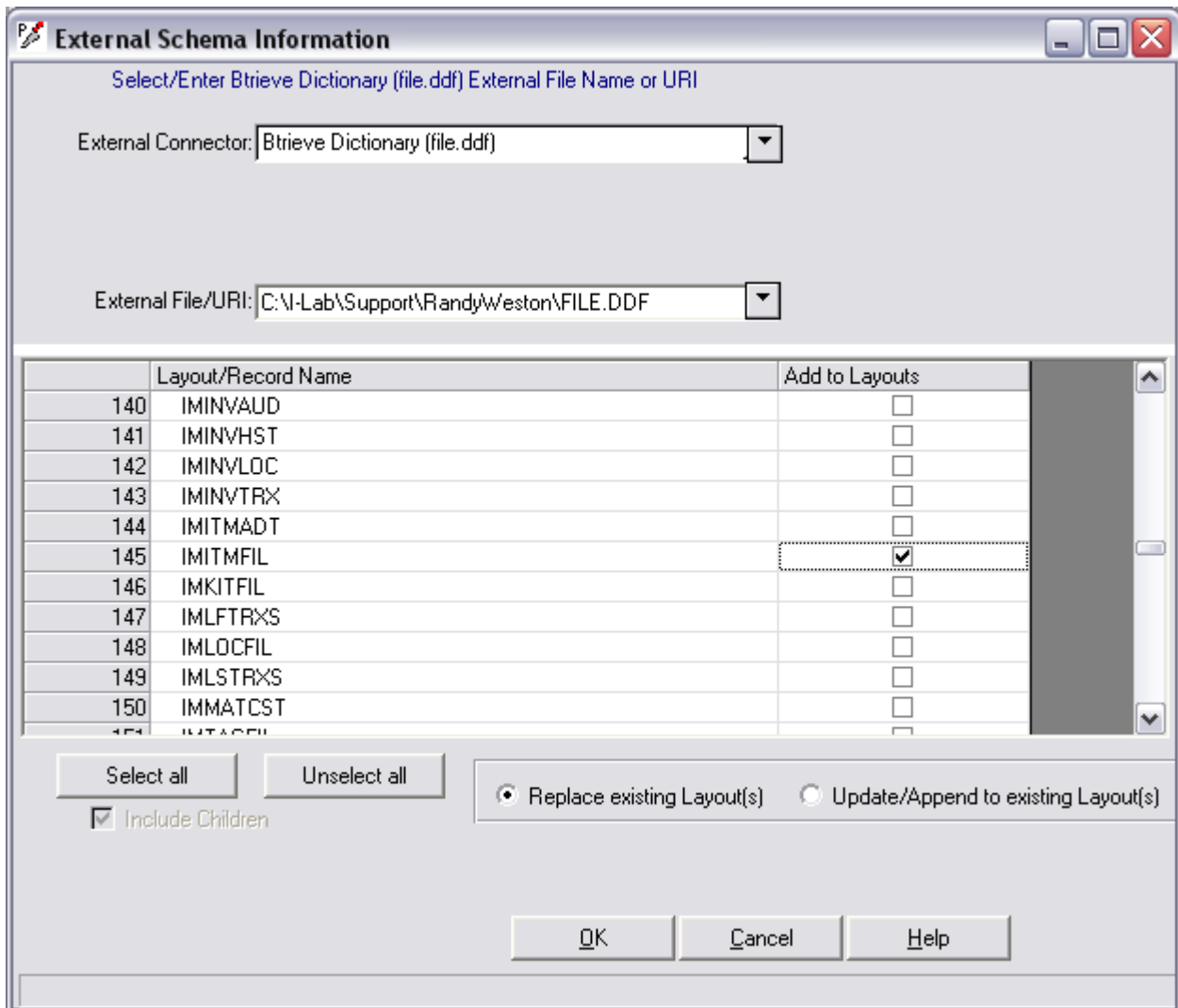
Connecting to an External Dictionary File

1. On the Source Connection tab, select the **Base Connector**, and select your **Source File** (data file). This example uses a Btrieve dictionary file.
2. Click on the down arrow to the right of the **Structured Schema** box, and select the appropriate dictionary file format from the picklist.



The **External Schema Information** window will open (see next page).

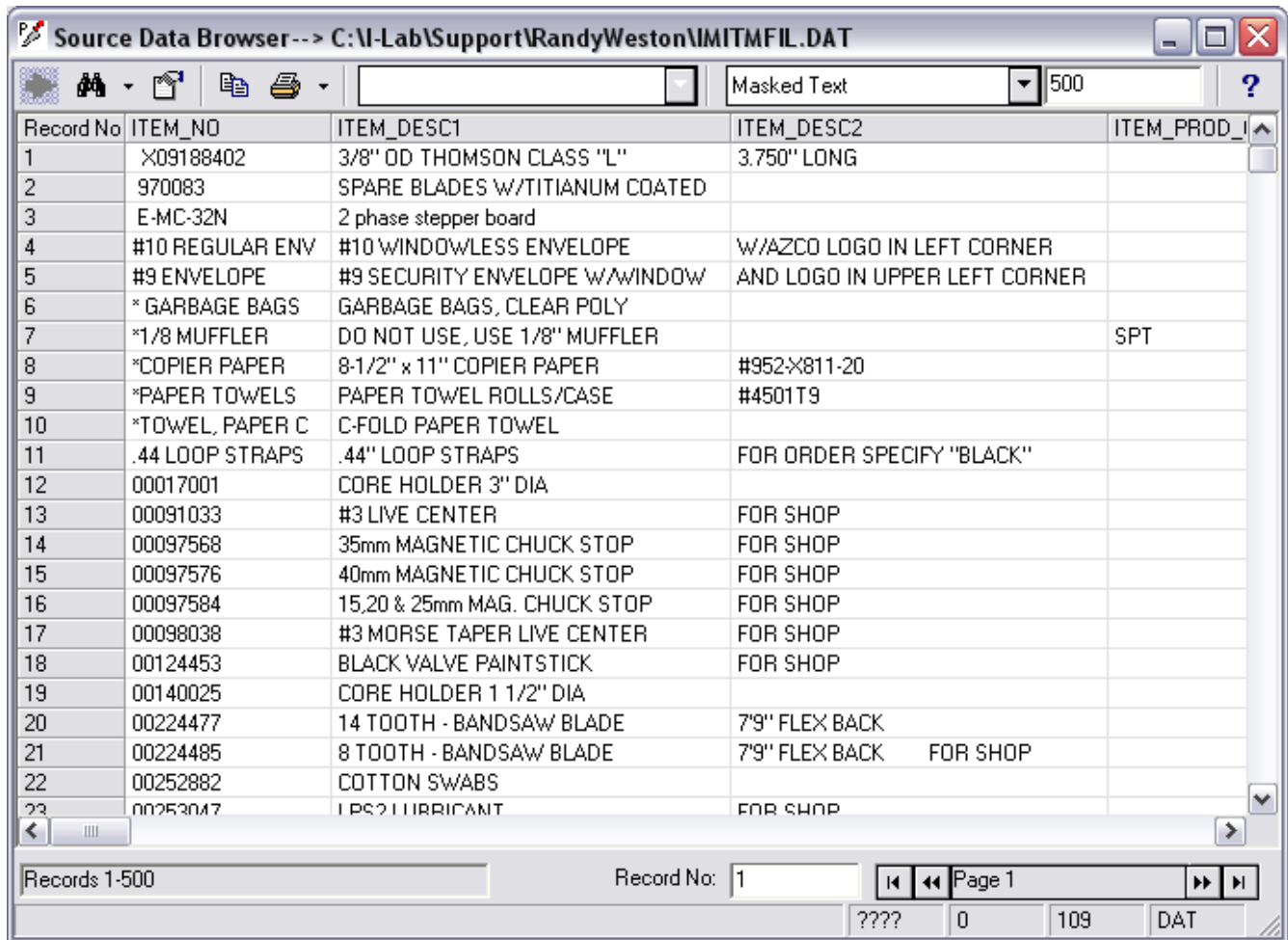
3. In the **External Schema Information** window, your selected dictionary connector type appears in the **External Connector** box. This is the application name or format of the data file whose structure you want to connect to.



4. Select the **External File/URI** by clicking the down arrow and navigating to your **FILE.DDF** dictionary file.
5. From the **Layout/Record Name** section, select the record structure that “matches” the data file to which you are connected by clicking in the checkbox to the right of the record name.
6. In the bottom right corner of the window be sure the “Replace existing Layout(s)” is selected. This will “overlay” the schema definition that is defined in the dictionary file for THIS data file, and “autoparse” the records into fields.
7. Click **OK**.
8. When defining a source data file you will be prompted with a dialog box that says: "Current record type list will be overwritten". If you are sure you have selected the correct layout from the list, click **OK**.
9. You should now be positioned at the Source Connection tab.

10. Locate the Source Data Browser icon in the blue section of the button bar and click on it.

11. When the Browser window opens, you should see neat, clean rows and columns of unpacked data from the source file. Like in Microsoft Excel, you can place your mouse over the vertical lines between two columns and double-click to optimize the width of a column. The Browser displays 500 rows at a time, and you can scroll up, down, left, and right to view the data. You can also move to the “next” 500 rows by clicking on the arrows in the lower right corner of the Browser window.



The screenshot shows a window titled "Source Data Browser --> C:\I-Lab\Support\RandyWeston\IMITMFIL.DAT". The window contains a table with the following columns: Record No, ITEM_NO, ITEM_DESC1, ITEM_DESC2, and ITEM_PROD_I. The table displays 23 rows of data. The bottom of the window features a navigation bar with "Records 1-500", "Record No: 1", "Page 1", and a file type indicator "DAT".

Record No	ITEM_NO	ITEM_DESC1	ITEM_DESC2	ITEM_PROD_I
1	X09188402	3/8" OD THOMSON CLASS "L"	3.750" LONG	
2	970083	SPARE BLADES W/TITANIUM COATED		
3	E-MC-32N	2 phase stepper board		
4	#10 REGULAR ENV	#10 WINDOWLESS ENVELOPE	W/AZCO LOGO IN LEFT CORNER	
5	#9 ENVELOPE	#9 SECURITY ENVELOPE W/WINDOW	AND LOGO IN UPPER LEFT CORNER	
6	* GARBAGE BAGS	GARBAGE BAGS, CLEAR POLY		
7	*1/8 MUFFLER	DO NOT USE, USE 1/8" MUFFLER		SPT
8	*COPIER PAPER	8-1/2" x 11" COPIER PAPER	#952-X811-20	
9	*PAPER TOWELS	PAPER TOWEL ROLLS/CASE	#4501T9	
10	*TOWEL, PAPER C	C-FOLD PAPER TOWEL		
11	.44 LOOP STRAPS	.44" LOOP STRAPS	FOR ORDER SPECIFY "BLACK"	
12	00017001	CORE HOLDER 3" DIA		
13	00091033	#3 LIVE CENTER	FOR SHOP	
14	00097568	35mm MAGNETIC CHUCK STOP	FOR SHOP	
15	00097576	40mm MAGNETIC CHUCK STOP	FOR SHOP	
16	00097584	15,20 & 25mm MAG. CHUCK STOP	FOR SHOP	
17	00098038	#3 MORSE TAPER LIVE CENTER	FOR SHOP	
18	00124453	BLACK VALVE PAINTSTICK	FOR SHOP	
19	00140025	CORE HOLDER 1 1/2" DIA		
20	00224477	14 TOOTH - BANDSAW BLADE	7"9" FLEX BACK	
21	00224485	8 TOOTH - BANDSAW BLADE	7"9" FLEX BACK FOR SHOP	
22	00252882	COTTON SWABS		
23	00253047	LPS2 LUBRICANT	FOR SHOP	

12. If all the data looks “correct”; i.e., it is unpacked and readable, click on the Run Map button in the button bar to export the data to a CSV text file.